

Section Across Area between Box Culverts in Portion D

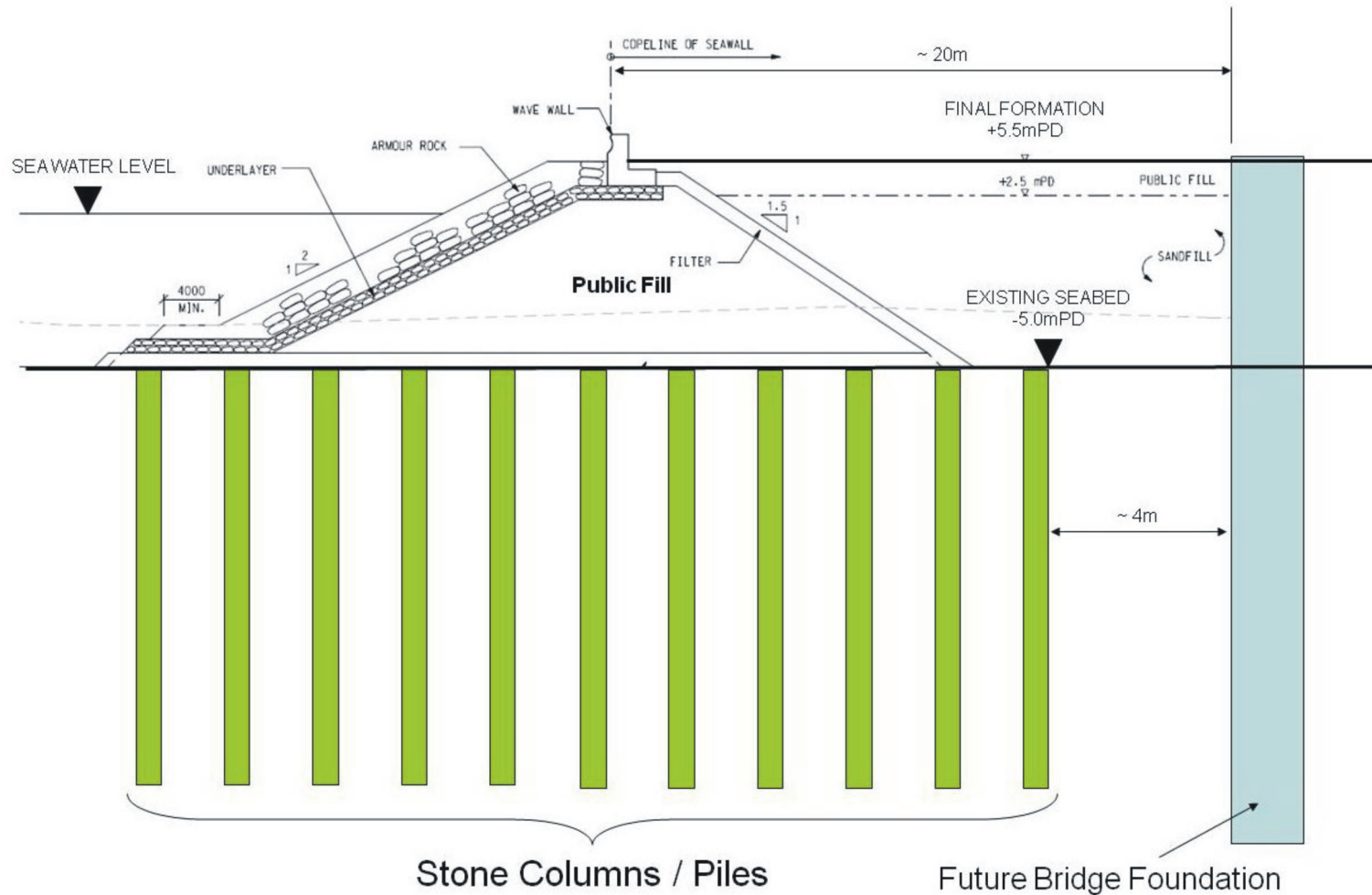


Figure 26 - Seawall Formation in Portion D (Sheet 3 of 3)

圖 26 - D部分海堤構造(表3之3)

(Plan originated from Figure 2.4 of submitted documents dated 11 June 2010 with Application for Variation of an Environmental Permit no. VEP-315/2010)

(圖則源自於2010年6月11日提交跟更改環境許可證申請編號VEP-315/2010的文件 圖2.4)

Environmental Permit No.: EP-353/2009/A

環境許可證編號：EP-353/2009/A

